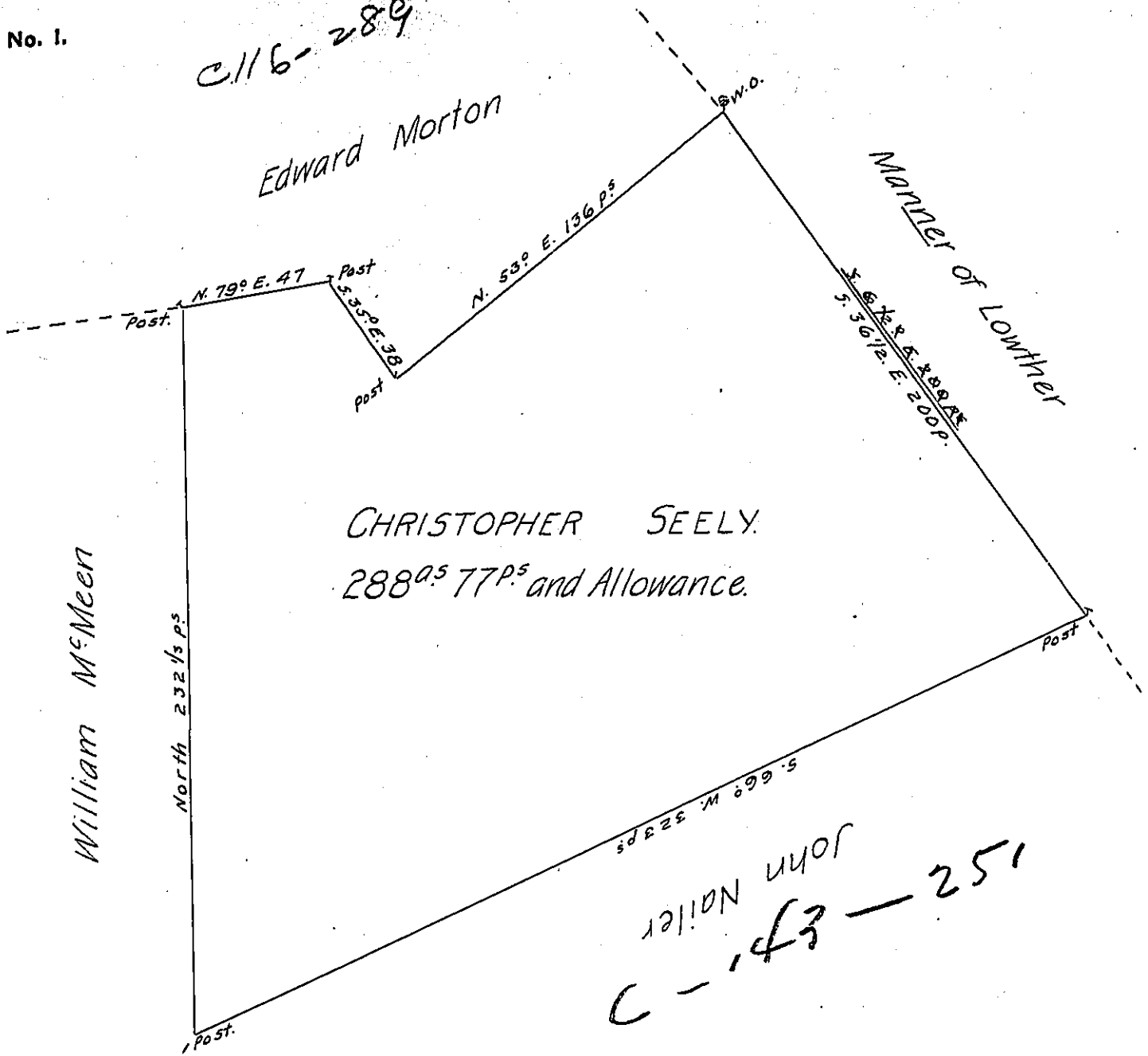


C116-289



A Draught of a Tract of Land Situate in East Pennsborrow Township, in the County of Cumberland. Containing Two Hundred and Eighty-eight Acres and Seventy seven perches and the usual Allowance of Six  $\frac{1}{2}$  Cent for Roads &c Surveyd for Christopher Seely the 10<sup>th</sup> Day of November 1766, in Pursuance of the Honourable the Proprietaries Warrant Bearing Date the 2<sup>nd</sup> Day of May 1765.

John Armstrong

To John Lukens, Esq<sup>r</sup> }  
 Surveyor General }

D. S.

IN TESTIMONY that the above is a copy of the original remaining on file in the Department of Internal Affairs of Pennsylvania, made conformably to an Act of Assembly approved the 16th day of February, 1833, I have hereunto set my Hand and caused the Seal of said Department to be affixed at Harrisburg, this twenty-second day of October 1906.

*James P. Brown*  
 Secretary of Internal Affairs.